

**Genesis, the start of new era in inline digital inkjet printing for medical and pharmaceutical packaging.**

Prints at the highest resolutions while keeping pace with the industry's fastest packaging machines.



Genesis is an inline high-definition digital ink jet printer capable of printing on most medical device and pharmaceutical packaging substrates, including paper, Tyvek® and flexible films.

**The inline Genesis Digital Inkjet Printer is the perfect, high-speed solution for printing package graphics directly onto packaging substrates.** Genesis prints the complete graphic, including any variable information such as lot number, expiration date, and all UDI requirements.

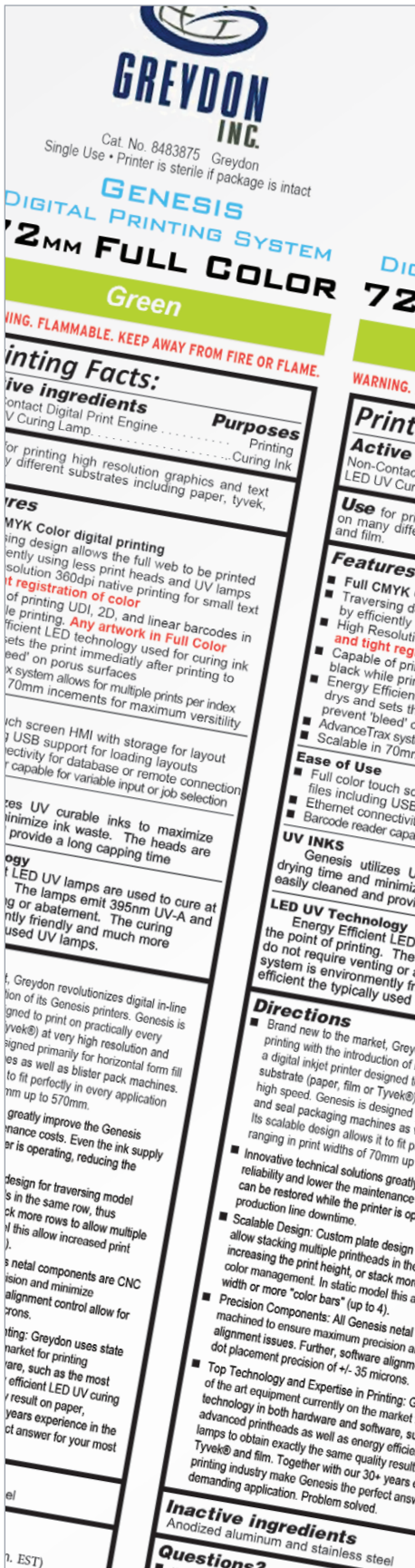
What makes Genesis unique and affordable is that it prints across the web while the web is stopped. Traversing at up to 1,000

mm per second, and printing in both directions, Genesis can print 2, 3 or 4 times covering the entire width of the web as well as the complete index.

Genesis consists of 1, 2, 3, or 4 print heads. Each print head is 72 mm wide and prints up to 360 dpi. A high-speed, bi-directional traverse carries the print heads on the X axis and Greydon's Advanced Trax web management system moves the web in the Y axis to print as many

rows as necessary.

Genesis prints using UV inks. UV inks are stable and don't dry up in the ink jet heads, so the nozzles do not clog. A built-in LED lamp is traversed along with the print heads to immediately cure the UV inks while eliminating any bleeding, smearing, or distortion of the printed ink. Genesis can print in one color, two color or four color process. UV inks are the least costly of all digital printer technologies.



**GREYDON INC.**  
Cat. No. 8483875 Greydon  
Single Use • Printer is sterile if package is intact

**GENESIS DIGITAL PRINTING SYSTEM**  
**2MM FULL COLOR**  
**Green**

**Printing Facts:**

Active ingredients	Purposes
Contact Digital Print Engine	Printing
UV Curing Lamp	Curing Ink

**Features**

- MYK Color digital printing design allows the full web to be printed efficiently using less print heads and UV lamps solution 360dpi native printing for small text
- **Registration of color** of printing UDI, 2D, and linear barcodes in efficient LED technology used for curing ink sets the print immediately after printing to 'x' system allows for multiple prints per index 70mm increments for maximum versatility
- Touch screen HMI with storage for layout activity for database or remote connection capable for variable input or job selection
- UV curable inks to maximize minimize ink waste. The heads are provide a long capping time
- **LED UV lamps** are used to cure at The lamps emit 395nm UV-A and friendly and much more used UV lamps.

**Directions**

- Brand new to the market, Greydon printing with the introduction of a digital inkjet printer designed to substrate (paper, film or Tyvek®) high speed. Genesis is designed for its scalable design allows it to fit packaging machines as well as ranging in print widths of 70mm up to 570mm
- Innovative technical solutions greatly reliability and lower the maintenance. can be restored while the printer is operating line downtime.
- Scalable Design: Custom plate design allow stacking multiple printheads in the color management. In static model this allow width or more "color bars" (up to 4).
- Precision Components: All Genesis metal machined to ensure maximum precision alignment issues. Further, software alignment placement precision of +/- 35 microns.
- Top Technology and Expertise in Printing: Genesis of the art equipment currently on the market advanced printheads as well as energy efficient Tyvek® and film. Together with our 30+ years of printing industry make Genesis the perfect answer for demanding application. Problem solved.

**Inactive ingredients**  
Anodized aluminum and stainless steel

**Questions?**

Genesis is designed to be installed on horizontal form/fill/seal packaging machines, as well as blister pack machines. Versatile mounting options allow seamless integration. Its scalable design allows it to fit perfectly in every application ranging in print widths of 70 mm up to 570 mm.

### Scalable Design

Custom plate design for the traversing model allows stacking multiple print heads in the same row, thus increasing the print height, or stacking more rows to allow multiple color management. In the non-traversing static model, this allows increased print width or more "color bars" (up to 4).

### Precision Components

All Genesis metal components are CNC machined to ensure maximum precision and minimize alignment issues. Software alignment control allows for dot placement precision of +/- 35 microns.



### UV Ink System

Genesis utilizes UV-curable liquid inks supplied in 1L containers. Once cured, the ink becomes fully solid and will not leach or bleed.

A self-managing ink system automatically manages ink levels for optimum print quality. The ink



supply can be replenished while the system is operating with no loss of production or print quality.

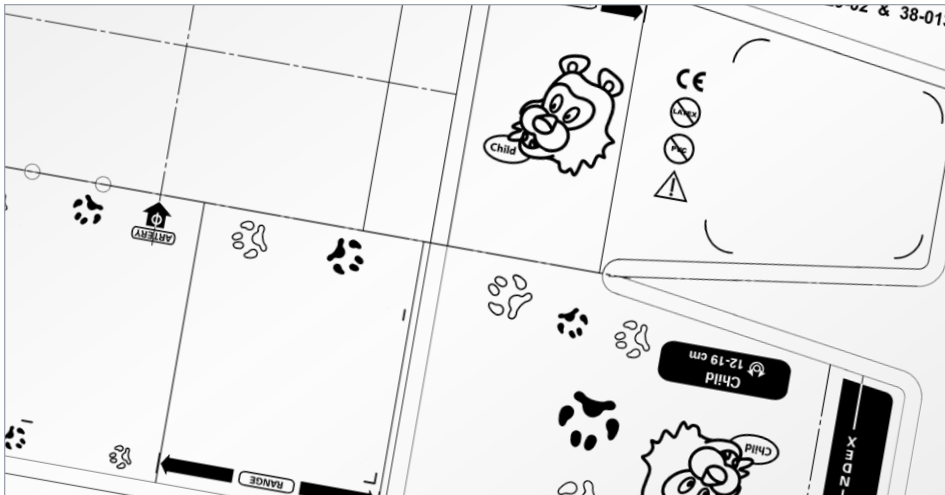
### LED UV Ink Curing Lamps

Genesis utilizes energy-efficient, instant-on LED UV ink curing lamps. The LED lamps require significantly less energy than traditional mercury curing lamps and due to their instant-on feature, are only activated when curing. This results in even better efficiency and longer life. The lamps are rated for 20,000 hours of operation without output degradation.

### Superior software

Greydon provides label template design software which can be installed on a separate PC for template creation and management. As this software is also installed on the Genesis HMI, it can be used directly on the machine for local label creation and editing.

The software accepts many different types of artwork files and allows for manipulation, sizing, and variable data/barcode placement. Genesis offers full support for a multitude of barcode formats and fully integrates the GS1 standards for 2D UDI implementation.



## Technical Specifications

	Traversing Head Model	Static Head Model
<b>Print Width</b>	72-140-210-280 mm	72 mm up to 560 mm
<b>Color</b>	Single Color, Dual Color, and Full Color CMYK	
<b>Resolution</b>	Up to 720 dpi Binary or Grayscale (7 levels)	
<b>Print Speed</b>	Up to 1,000 mm/sec	
<b>Print Head Type</b>	Digital Piezo Technology, 360 dpi native, 1,024 nozzles	
<b>Drive Electronics</b>	Proprietary	
<b>Ink System</b>	Passive Meniscus Control – Oil, Water, and UV Ink compatible	
<b>Number of Print Heads</b>	Up to 4	Up to 8

### Custom Printers

Greydon can manufacture a Genesis Printer that meets your unique requirements and imprint size. Please contact us for more information.

### Greydon: Expertise in Printing

30+ years of experience in the printing industry make Greydon and Genesis the perfect solution for your most demanding applications.

Contact the experts at Greydon for more information.