

Ensuring Fast Changeover on LSI Labeling Systems



Getting up and running as quickly as possible when changing to a new package size is a great way to increase productivity.

Our recipe driven Quick Changeover Package is designed to ensure you get back in production fast!

Ensuring Fast Changeover on LSI Labeling Systems

ID Technology's LSI labeling systems are engineered to be easy to operate and quick to set up for your next labeling job.

We have ensured that the number of adjustments and changing of parts is kept to a minimum. Even so there are often adjustments that need to be made when switching your packaging line from one container to another.

Our Quick Changeover Package keeps downtime to a minimum when changing to the next product size.

What's Included?

Change parts (if included) clearly identified

Every adjustment point is clearly and uniquely identified in bright orange

All adjustments have a scale or gauge to ensure repeatability

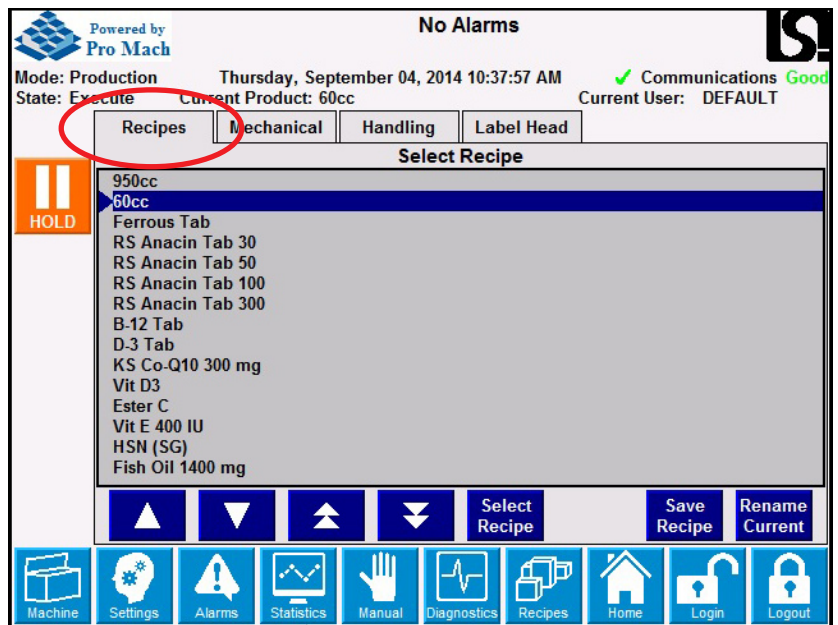
Recipes for Fast Changeover

The system is recipe driven so a supervisor can save the settings for every product and give them a meaningful name. When recalling the settings from the recipe menu, all of the electronic parameters are set automatically and the mechanical settings are clearly displayed.

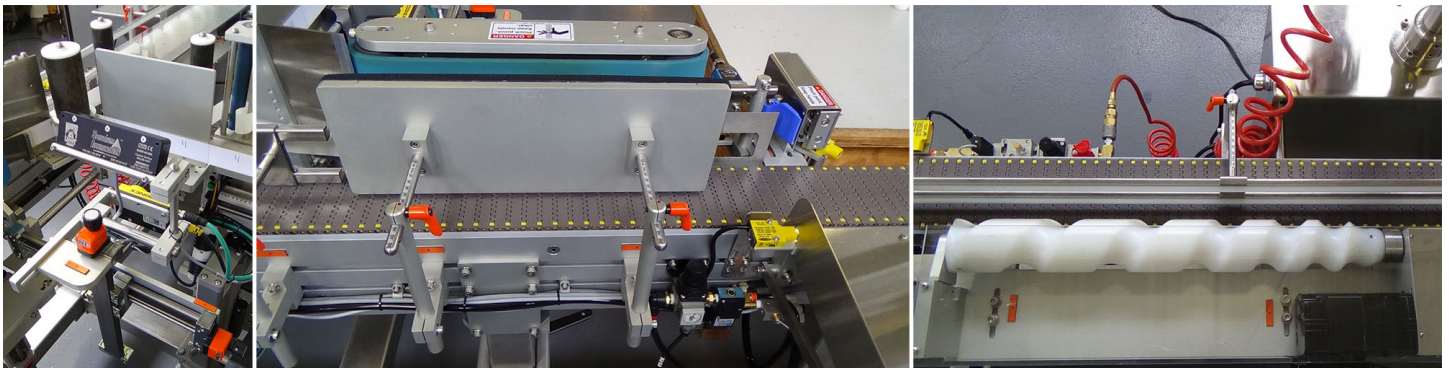
The display guides the operator around the machine, by the orange markers on each adjustment point.

Need to improve your labeling operations?

Call us at **888-438-3242** and we'll get you in touch with a Labeling Specialist right in your area!



The job to be run is chosen on the Recipes tab



Mechanical Settings

Once the recipe for the job has been chosen, the "Mechanical" tab guides the operator around the machine, by the orange markers on each adjustment point - starting at location A, then B etc. These adjustments include the guide rails, wrap station and all the other modules that make up the labeling system.

This ensures that the settings are made in the correct order to give best results.

By following the settings in the specified order, the complete set up is accomplished in a single trip around the machine.

Product Handling Settings

This tab includes all the timers (label delay, reject delay, label inspection settings, etc.) that were previously set and saved with the recipe.

The display shows the value saved in the recipe and the current value that might have been adjusted during fine tuning.


Labeling Head

This tab contains all the settings that apply to the labeling head that were saved with the recipe.

Get Running Fast

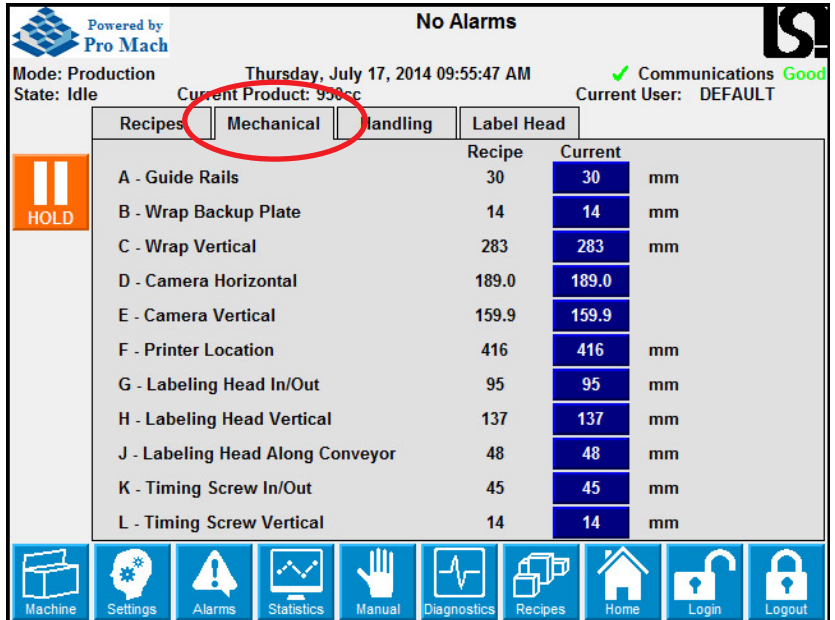
Using the recipe system, combined with accurate scale or gauge on every adjustment point ensures that downtime associated product changeover is kept to a minimum.

Some of our labeling machines are built for demanding applications with a number of machine modules and label/container inspection stations. Our recipe driven Quick Changeover Package provides a simple, logical way to ensure fast, repeatable, product changeover.

 ID Technology labeling systems are built here in the USA at our manufacturing facilities in Texas and New Jersey

ID Technology
2051 Franklin Drive, Fort Worth, TX 76106
888.438.3242 www.idtechnology.com

powered by Pro Mach 



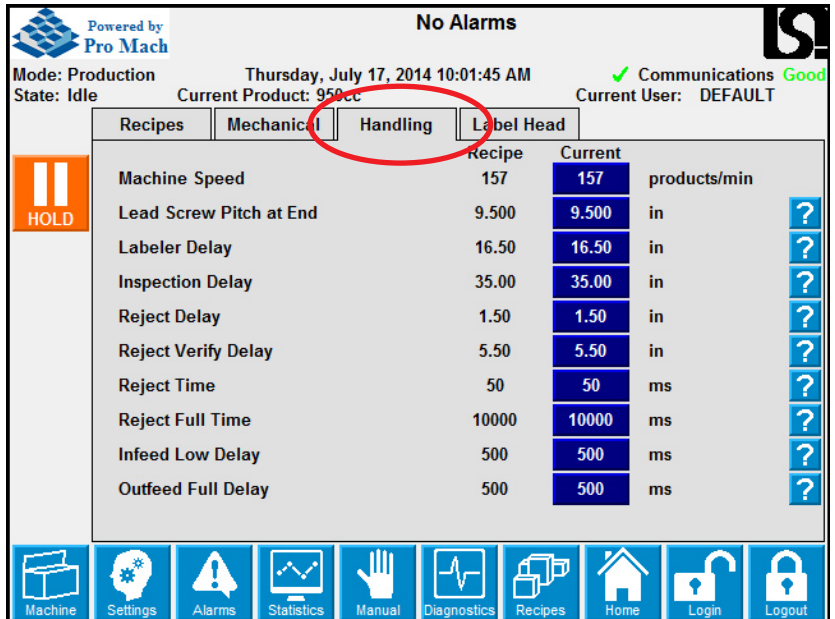
Powered by Pro Mach

No Alarms

Mode: Production Thursday, July 17, 2014 09:55:47 AM ✓ Communications Good
State: Idle Current Product: 950cc Current User: DEFAULT

Recipes	Mechanical	Handling	Label Head		
			Recipe	Current	
A - Guide Rails			30	30	mm
B - Wrap Backup Plate			14	14	mm
C - Wrap Vertical			283	283	mm
D - Camera Horizontal			189.0	189.0	
E - Camera Vertical			159.9	159.9	
F - Printer Location			416	416	mm
G - Labeling Head In/Out			95	95	mm
H - Labeling Head Vertical			137	137	mm
J - Labeling Head Along Conveyor			48	48	mm
K - Timing Screw In/Out			45	45	mm
L - Timing Screw Vertical			14	14	mm

Machine Settings Alarms Statistics Manual Diagnostics Recipes Home Login Logout



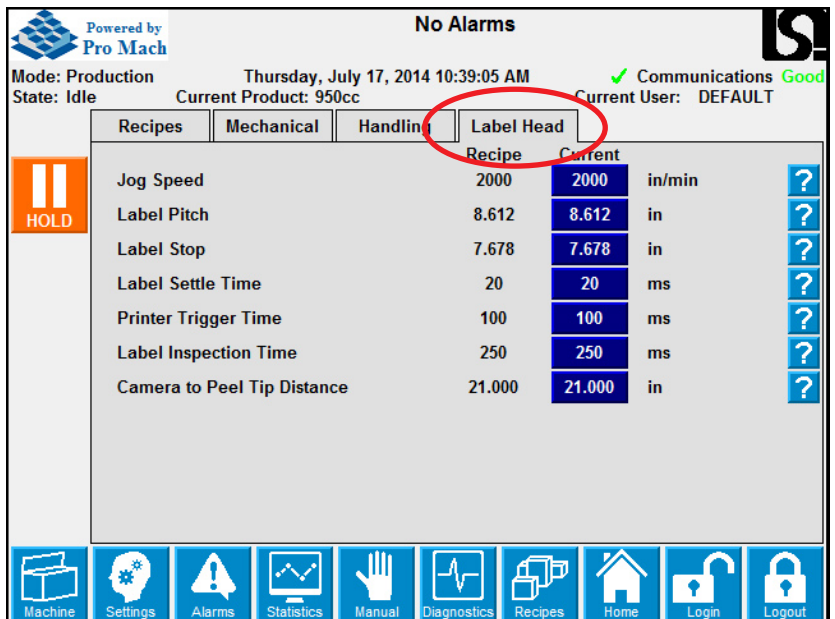
Powered by Pro Mach

No Alarms

Mode: Production Thursday, July 17, 2014 10:01:45 AM ✓ Communications Good
State: Idle Current Product: 950cc Current User: DEFAULT

Recipes	Mechanical	Handling	Label Head		
			Recipe	Current	
Machine Speed			157	157	products/min
Lead Screw Pitch at End			9.500	9.500	in ?
Labeler Delay			16.50	16.50	in ?
Inspection Delay			35.00	35.00	in ?
Reject Delay			1.50	1.50	in ?
Reject Verify Delay			5.50	5.50	in ?
Reject Time			50	50	ms ?
Reject Full Time			10000	10000	ms ?
Infeed Low Delay			500	500	ms ?
Outfeed Full Delay			500	500	ms ?

Machine Settings Alarms Statistics Manual Diagnostics Recipes Home Login Logout



Powered by Pro Mach

No Alarms

Mode: Production Thursday, July 17, 2014 10:39:05 AM ✓ Communications Good
State: Idle Current Product: 950cc Current User: DEFAULT

Recipes	Mechanical	Handling	Label Head		
			Recipe	Current	
Jog Speed			2000	2000	in/min ?
Label Pitch			8.612	8.612	in ?
Label Stop			7.678	7.678	in ?
Label Settle Time			20	20	ms ?
Printer Trigger Time			100	100	ms ?
Label Inspection Time			250	250	ms ?
Camera to Peel Tip Distance			21.000	21.000	in ?

Machine Settings Alarms Statistics Manual Diagnostics Recipes Home Login Logout