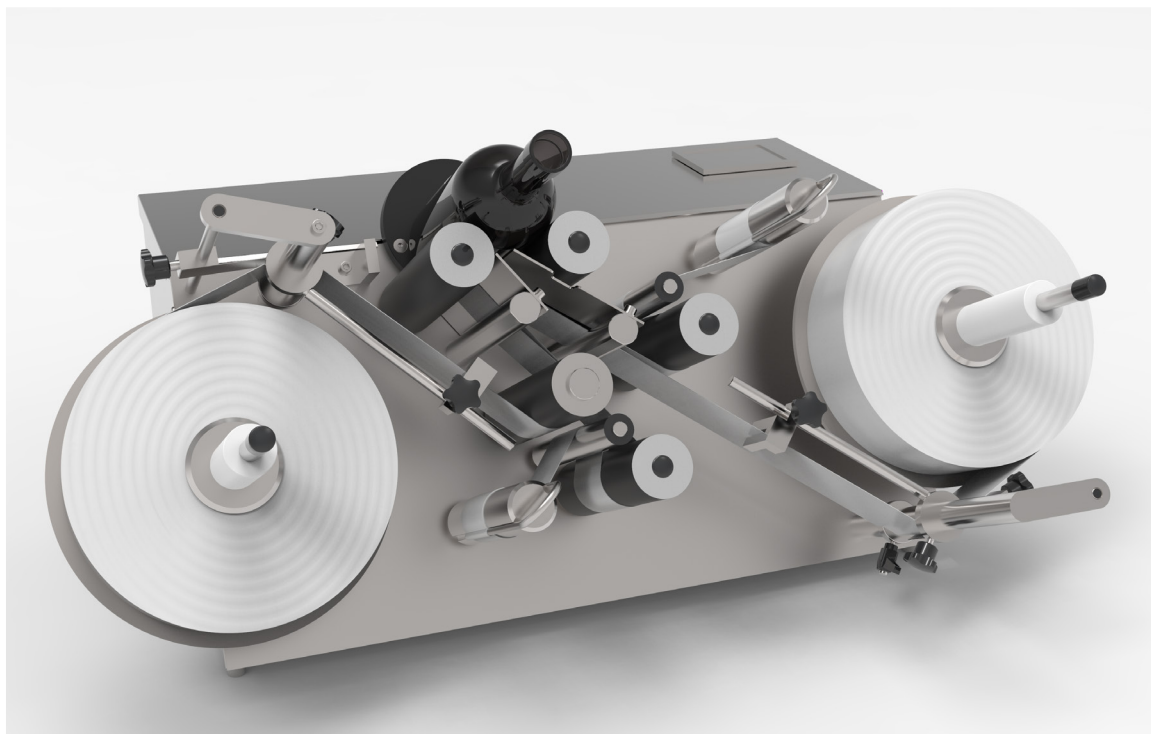


PRATICA DUO SEMI-AUTOMATIC LABELING SYSTEM



Apply one or two labels to round containers

ProMach has a comprehensive portfolio of automatic labeling systems that can handle just about every possible application.

Sometimes, though, there is a need for low speed equipment that can be used as the first step in automating the labeling process.

For companies needing to accurately apply one or two labels to round containers, in small volumes, the Pratica Duo is a specially designed solution.

A semi-automatic tabletop labeler, the Duo is built with a pair of label applicators, so that front and back labels can be applied at the same time.

FEATURES AND BENEFITS

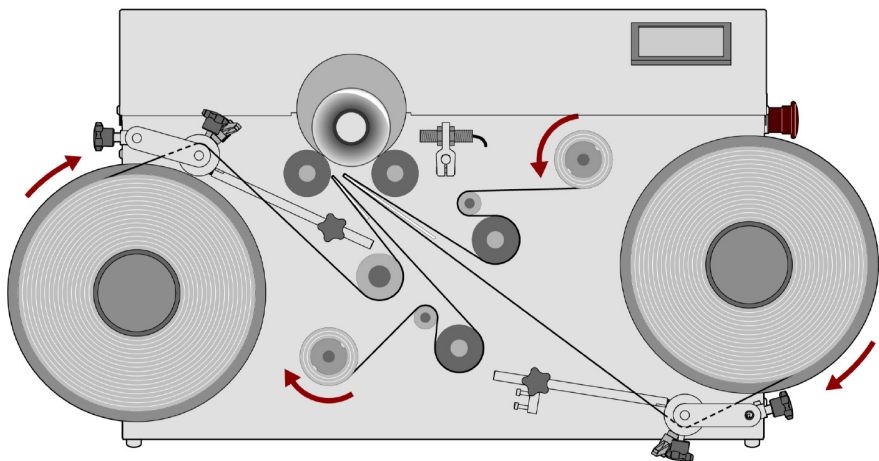
- Simple operation is easier, faster and more accurate than labeling by hand.
- Simple to set up, use and maintain.
- Fast changeovers with quick selection of single and dual label modes.
- Higher output (and lower label cost) than applying two labels from the same web.
- Ergonomic design reduces operator strain.
- Minimize floor space usage.

TYPICAL PRODUCT SPECIFICATIONS

Footprint	945 mm x 650mm (37" x 25.5")
Speed	Up to 14 products per minute (operator dependent)
Product Type	Round containers
Diameter	Min: 30mm (1.18") Max: 130mm (5.125")
Minimum Height	30mm (1.18")
Maximum Height	350mm (13.75")

Label Roll	Max: 10.25" diameter on 3" cores
Label Height	Max: 190mm (7.5")
Label Length	Minimum 30mm (1.18")
Electrical Requirements	110v 60Hz
Air Requirements	No air required

PRODUCT OPERATION



OPTIONAL ITEMS

- Label sensor for clear labels.
- Orientation sensor - apply labels in orientation to a handle, emblem, existing label, bottle seam, etc.
- Imprinter for date/lot codes, etc.

The Duo uses recipes to ensure set-up for production is quick and easy. The settings for the various container and label combinations are stored in memory (password protected, of course) and can quickly be recalled by the operator for a particular labeling job.

Operator set up for a labeling job consists of:

- Load the appropriate labels onto the machine.
- Recall the correct job from the memory.
- Place the first container in the labeling position. The Duo will rotate the container, apply the labels and stop when finished.
- Repeat until the production job is complete.

©2018 ProMach Inc. ProMach reserves the right to change or discontinue specifications and designs shown in this brochure without notice or recourse
Pratica Duo